



HYDRAULIC SCISSOR LIFT

SERVICE AND INSTALLATION MANUAL



DO NOT OPERATE BEFORE READING

DO NOT DISCARD

TABLE OF CONTENTS

TABLE OF CONTENTS	2
GENERAL SAFETY STATEMENTS	3
Introduction	3
Cautions, Warnings and Hazards.....	3
SAFETY INFORMATION	4
General Safety Labels	4, 5
Scissor Lift Safety Labels.....	6
Installation Safety.....	7
Electrical Safety	8
Operational Safety.....	9
Maintenance and Service Safety	10, 11
Responsibilities of Owners and Users	12
Warnings	13
RECEIVING AND INSPECTION	14
Returns, Damages and Shortages	14
Removal of Crating	14
GENERAL INSTALLATION	15
Installation Instructions.....	15, 16
Pit Layout Drawing	17
Sequence of Operation	18
Operating Instructions.....	19
MAINTENANCE.....	20
Maintenance Instructions	20
Maintenance Schedules	21
General Hydraulic Information.....	22
Oil Viscosity Recommendations	23
Report on Miscellaneous Maintenance Performed	24
TROUBLESHOOTING	25
Troubleshooting	25
Electrical Schematic Single-Phase	26
Electrical Schematic Three-Phase.....	27
Hydraulic Schematic Shop-Aid	28
Hydraulic Schematic Power-Up/Power Down.....	29
Hydraulic Schematic Pump and Down Valve.....	30
PARTS LISTS.....	31
Scissor Lift.....	31 - 32
Internal Power Unit.....	33
External Power Unit	34
NOTES	35
WARRANTY	36 - 39
APPENDIX 1: Standard Hydraulic Power Unit Installation Guide	40 - 42

GENERAL SAFETY STATEMENTS

IMPORTANT REQUIRED READING!



¡IMPORTANTE! ¡LECTURA OBLIGATORIA!

To ensure this quality product is safely and correctly utilized, all instructions within this manual must be read and understood prior to equipment start-up. Be aware of all safety labels on machinery. **If you do not understand any of the safety instructions or feel there may be safety labels missing, contact your supervisor or product supplier immediately!**

Para garantizar que este producto de calidad se utilice correctamente y con seguridad, es necesario leer y comprender las instrucciones incluidas en este manual, antes de comenzar a utilizar el equipo. Esté atento a todas las etiquetas de seguridad que se encuentran en las máquinas. Si no entiende alguna de las instrucciones de seguridad o considera que faltan algunas etiquetas de seguridad, ¡comuníquese inmediatamente con su supervisor o proveedor del producto!

COMPLIANCE WITH SAFETY STANDARDS

Compliance with safety standards, including federal, state and local codes or regulations is the responsibility of the equipment purchaser(s). Placement of guards, safety labels and other safety equipment is dependent upon the area and use to which the system is applied. A safety study should be made of the equipment application by the purchaser(s). It is the purchaser's responsibility to provide any additional guards, safety labels or other safety equipment deemed necessary based on this safety study.

The information contained in this safety manual is correct at the time of printing. Due to the continuing development of product lines, changes in specifications are inevitable. The company reserves the right to implement such changes without prior notice.



If you suspect fire hazards, safety hazards, dangers towards health or any other job safety concerns, consult your federal, state or local codes.



Certain safety information in this document was reprinted from ASME B20.1-2000 by permission of The American Society of Mechanical Engineers. All rights reserved.

Inspect equipment for **safety labels**. Make sure personnel are aware of and follow safety instructions.



Maintain an **orderly environment** in the vicinity of the equipment at all times. Clean up spilled materials or lubricants immediately.



All personnel shall be instructed regarding the necessity for continuous care and attention to safety during the operation of the equipment. They **must be trained** to identify and immediately report all unsafe conditions or practices relating to the equipment and its operation.



Know your company's machine specific **Lockout / Tagout procedure**. **Do Not** perform maintenance until electrical disconnect has been turned off!

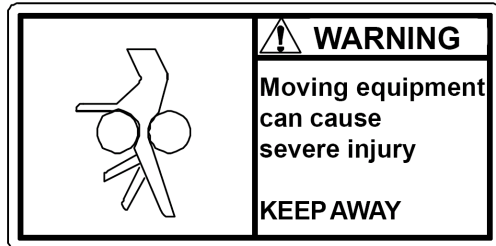


Replace all safety devices, guards and guarding prior to equipment start-up.

References used for safety instructions in this manual are from: Conveyor Equipment Manufacturers Association (CEMA) and The American Society of Mechanical Engineers (ASME)

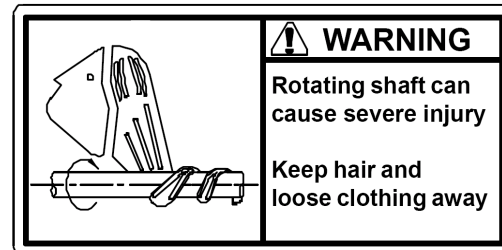
SAFETY INFORMATION: GENERAL SAFETY LABELS

Safety labels have been placed at various points on the equipment to alert everyone of potential dangers. Inspect equipment for proper position of safety labels and make sure all personnel are aware of the labels and obey their warnings. As mentioned in the previous section, a safety study should be made of the equipment application by the purchaser(s). **It is the purchaser's responsibility to provide any additional guards, safety labels or other safety equipment deemed necessary based on this safety study.** The following pages contain typical safety labels that may have been attached to your equipment.



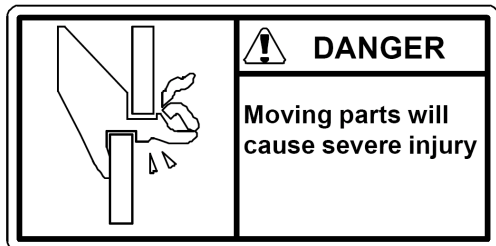
#110479 (5" x 2 1/2")

Placed on terminating ends (both ends) where there are exposed moving parts which must be unguarded to facilitate function, i.e. rollers, pulleys, shafts, chains, etc.



#113529 (5" x 2 1/2")

Placed next to drive (both sides) to warn personnel that the lineshaft conveyor utilizes a rotating shaft which may be hazardous if hair or loose clothing become entangled around the rotating shaft. Also used on any other conveyors where the exposed shaft may create similar hazards.



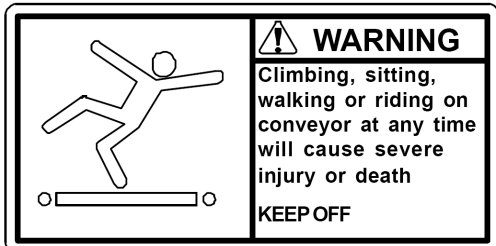
#111744 (5" x 2 1/2")

General warning to personnel that the equipment's moving parts, which operate unguarded by necessity or function, i.e., air cylinders, etc., create hazards to be avoided.



#110478 (5" x 2 1/2")

Placed on all chain guards to warn that operation of the machinery with guards removed would expose chains, belts, gears, shafts, pulleys, couplings, etc. which create hazards.



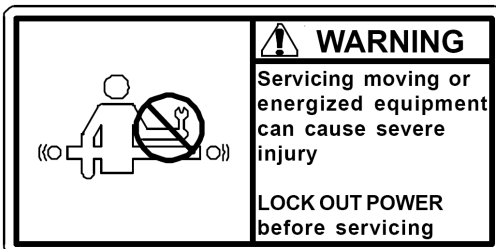
#111752 (5" x 2 1/2")

Placed on max. of 20' centers (both sides) along conveyors which provide surfaces and profiles attractive, but hazardous, for climbing, sitting, walking or riding.



#113513 (5" x 2 1/2")

Placed on chain guard base so label is visible when guard cover is removed.



#113528 (5" x 2 1/2")

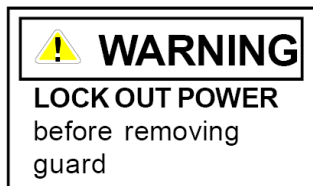
Placed next to drive (both sides) to warn maintenance personnel that conveyors must be shut off and locked out prior to servicing. Examples: drives, take-ups, and lubrication points, which require guard removal.



#111870 (5" x 3")

General warning of pinch point hazards.

SAFETY INFORMATION: GENERAL SAFETY LABELS (Continued)



#111750 (1 3/4" x 1 1/4")

Generally placed on smaller guards to alert personnel of potential danger if guard is removed and power is not locked out.



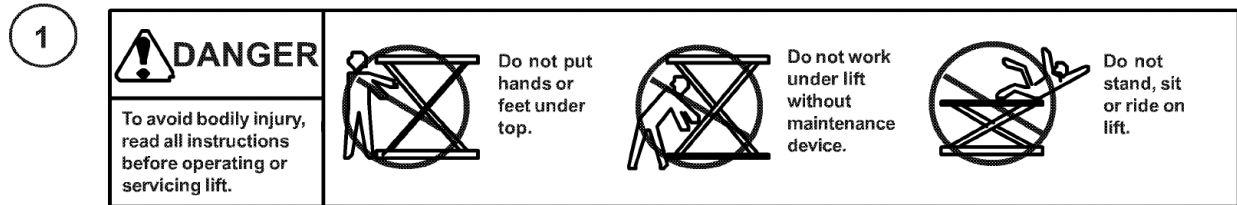
#111749 (3" x 1 1/4")

Placed on shipping brace which stabilizes equipment during shipping. Brace must be removed before operating! May cause severe injury if not removed.



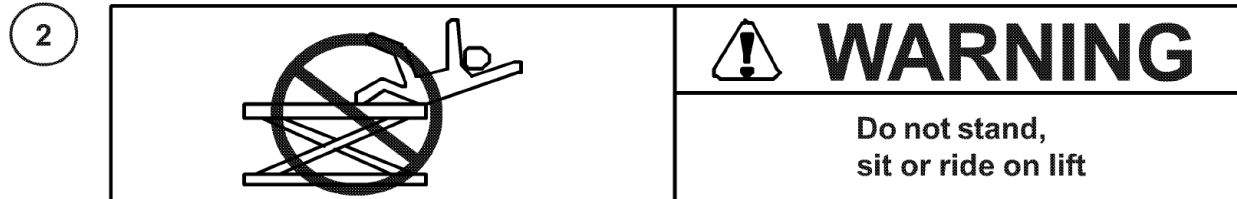
#110491 (10" x 7")

Placed on equipment where conveyors may start without warning.

SAFETY INFORMATION: SCISSOR LIFT SAFETY LABELS

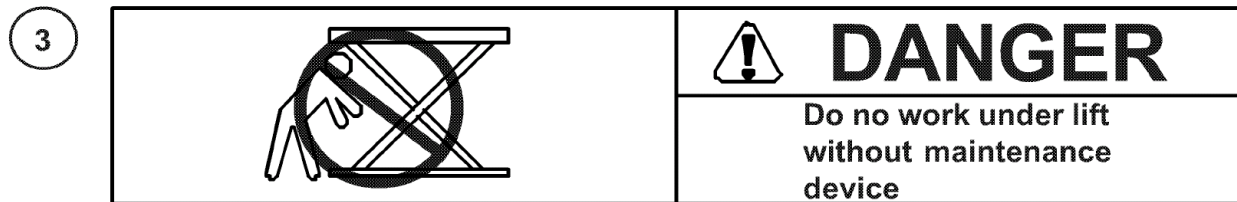
#113611 - A-4 (6 7/8 x 1 1/4) or B-4 (17 x 2)

Placed on the side edges of the lift table platform to warn personnel to read operating instruction before using lift table and to warn of possible bodily injury hazards.



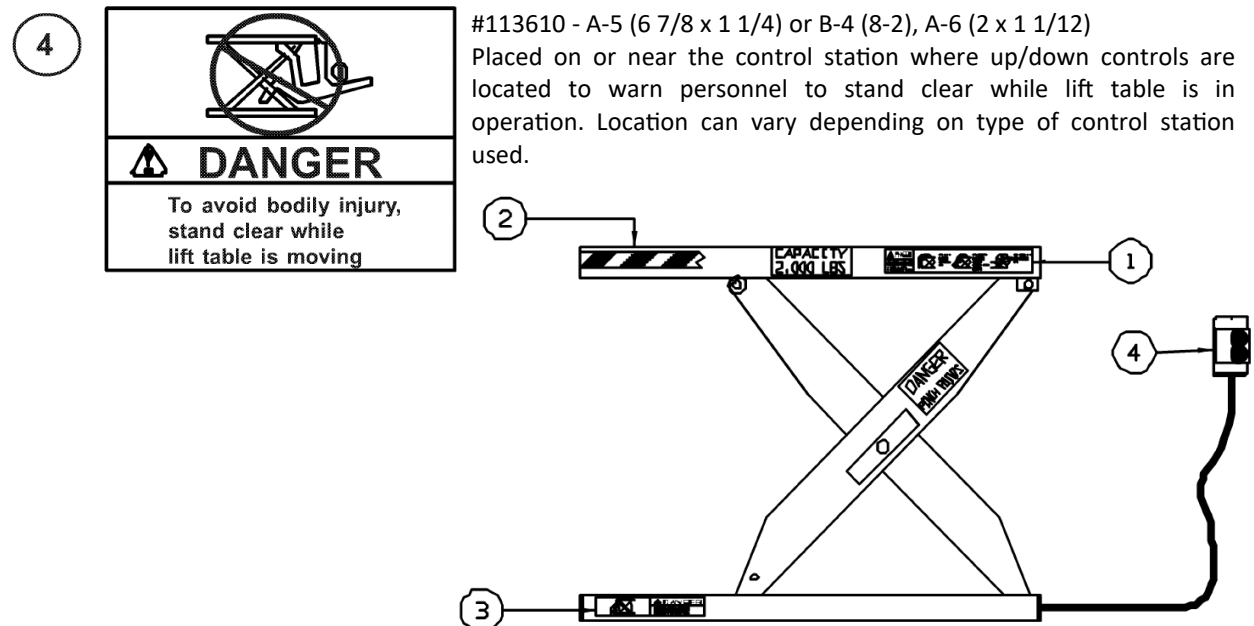
#113609 - A-1 (6 7/8 x 1 1/4) or B-1 (8 x 2)

Placed on the top surface of the lift table platform to warn personnel against riding on scissor lifts that are not designed for such use.



#113608 - A-3 (6 7/8 x 1 1/4) or B-3 (8 x 2)

Placed on the base frame adjacent to each maintenance device to warn service personnel to engage maintenance device before working on, and particularly under, lift table.



SAFETY INFORMATION: INSTALLATION SAFETY

1) **LOADING / UNLOADING**

Have trained personnel load or unload equipment. The equipment must be properly handled when transferring from the unloading area to final site location to prevent damage.

2) **GUARDS / GUARDING**

Interfacing of Equipment. When two or more pieces of equipment are interfaced, special attention shall be given to the interfaced area to ensure the presence of adequate guarding and safety devices.

Guarding Exceptions. Wherever conditions prevail that would require guarding under this standard but such guarding would render the equipment unusable, seek guidance from your safety professional.



3) **ANCHORING**

DO NOT operate equipment unless it is properly anchored. Serious injury or death may result.

4) Upon installation all fittings must be tightened and checked for leaks.

5) **SAFETY WARNING**

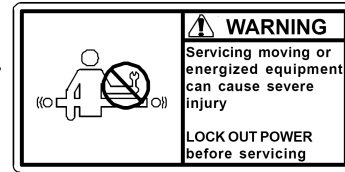
Install all safety devices, guards and guarding prior to equipment start-up.

SAFETY INFORMATION: ELECTRICAL SAFETY

1) ELECTRICAL CODE

All electrical installations and wiring shall conform to federal, state and local codes.

When equipment operation is not required for a maintenance procedure, **electrical power must be turned off and locked / tagged out following your company's machine specific procedure.**



2) CONTROL STATION

Control stations should be so arranged and located that the operation of the affected equipment is visible from them. Control stations shall be clearly marked or labeled to indicate the function controlled.

Equipment that would cause injury when started shall not be started until personnel in the area are alerted by a signal or by a designated person that the equipment is about to start.

Where system function would be seriously hindered or adversely affected by the required time delay, or where the intent of the warning may be misinterpreted (i.e., a work area with many different equipment and allied devices), a clear, concise and legible warning sign needs to be provided. The warning sign shall indicate that equipment and allied equipment may be started at any time, that danger exists and that personnel must keep clear. These warning signs shall be provided along the equipment at areas not guarded by position or location.

Remotely and automatically controlled equipment, and equipment where operator stations are not manned or are beyond voice or visual contact from drive areas, loading areas, transfer points and other potentially hazardous locations on the equipment path not guarded by location, position or guards shall be furnished with emergency stop buttons, pull cords, limit switches or similar emergency stop devices.

All such emergency stop devices shall be easily identifiable in the immediate vicinity of such locations unless guarded by location, position or guards. Where the design, function and operation of such equipment clearly is not hazardous to personnel, an emergency stop device is not required.

The emergency stop device shall act directly on the control of the equipment concerned and shall not depend on the stopping of any other equipment. The emergency stop devices shall be installed so that they cannot be overridden from other locations.

Inactive and unused actuators, controllers and wiring should be removed from control stations and panel board, together with obsolete diagrams, indicators, control labels and other material that might confuse the operator.

3) SAFETY DEVICES

All safety devices, including wiring of electrical safety devices, shall be arranged to operate such that a power failure or failure of the device itself will not result in a hazardous condition.

4) EMERGENCY STOPS AND RESTARTS

Equipment controls shall be so arranged that, in case of emergency stop, manual reset or start at the location where the emergency stop was initiated shall be required for the equipment and associated equipment to resume operation.

Before restarting the equipment that has been stopped because of an emergency, an inspection of the equipment shall be made and the cause of the stoppage determined. The starting device and electrical power must be turned off and locked / tagged out according to your company's machine specific procedure before any attempt is made to remove the cause of the stoppage, unless operation is necessary to determine the cause or to safely remove the stoppage.

5) SAFETY WARNING

Replace all safety devices, guards and guarding prior to equipment start-up.

SAFETY INFORMATION: OPERATIONAL SAFETY

Only trained, qualified personnel shall be permitted to operate the equipment. Training shall include instruction in operation under normal conditions and emergency situations.

Where safety is dependent upon stopping / starting devices, they shall be kept free of obstructions to permit access.

The area around loading and unloading points shall be kept clear of obstructions that could endanger personnel.

Do not ride the load-carrying element of a conveyor/equipment under any circumstances, unless the equipment is designed and equipped with safety and control devices intended to carry personnel. For no reason shall a person ride any element of a vertical conveyor. Warning labels reading **“DO NOT RIDE CONVEYOR”** shall be affixed by the owner of the equipment.



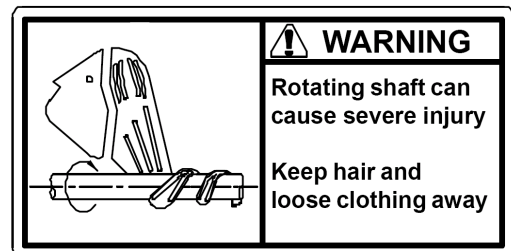
Personnel working on or near a conveyor/equipment shall be instructed as to the location and operation of pertinent stopping devices.

Equipment shall be used to transport only a load that it is designed to handle safely.

Under no circumstances shall the safety characteristics of the equipment be altered.

Routine inspections and preventative and corrective maintenance programs shall be conducted to ensure that all safety features and guards are retained and function properly. Inspect equipment for safety labels. Make sure personnel are aware of and follow safety label instructions.

Alert all personnel to the potential hazard of entanglement in conveyors/equipment caused by items such as long hair, loose clothing and jewelry.



SAFETY WARNING

Replace all safety devices, guards and guarding prior to equipment start-up.

SAFETY INFORMATION: MAINTENANCE / SERVICE SAFETY

ELECTRICAL POWER MUST BE TURNED OFF AND LOCKED / TAGGED OUT following your company's machine specific procedures when servicing equipment to prevent accidental restarting by other persons or interconnecting equipment (when used).

1) MAINTENANCE (REPAIR)

Maintenance and service shall be performed by trained, qualified personnel only.

Where lack of maintenance and service would cause a hazardous condition, the user shall establish a maintenance program to ensure that conveyor components are maintained in a condition that does not constitute a hazard to personnel.

No maintenance or service shall be performed when a conveyor is in operation. See "Lubrication" and "Adjustment or Maintenance During Operation" for exceptions.

When a conveyor is stopped for maintenance or service, the starting devices, prime mover, powered accessories or electrical must be locked / tagged out in accordance with a formalized procedure designed to protect all persons or groups involved with the conveyor against an unexpected restart. Personnel should be alerted to the hazard of stored energy, which may exist after the power source is locked out. All safety devices and guards shall be replaced before starting equipment for normal operation.

2) ADJUSTMENT OR MAINTENANCE DURING OPERATION

When adjustments or maintenance must be done while equipment is in operation, only trained, qualified personnel who are aware of the hazards of the conveyor in motion shall be allowed to make adjustments, perform maintenance or service.

Conveyors shall NOT be maintained or serviced while in operation unless proper maintenance or service requires the conveyor to be in motion. If conveyor operation is required, personnel shall be made aware of the hazards and how the task may be safely accomplished.

3) LUBRICATION

Conveyors shall **NOT** be lubricated while in operation unless it is impractical to shut them down for lubrication. Only trained and qualified personnel who are aware of the hazards of the conveyor in motion shall be allowed to lubricate a conveyor that is operating.

Where the drip of lubricants or process liquids on the floor constitutes a hazard, drip pans or other means of eliminating the hazard must be provided by purchaser(s).

4) MAINTENANCE OF GUARDS AND SAFETY DEVICES

Guards and safety devices shall be maintained in a serviceable and operational condition. Warning signs are the responsibility of the owner of the conveyor and must be maintained in a legible / operational condition.



SAFETY INFORMATION: MAINTENANCE / SERVICE SAFETY (Continued)

5) INSPECTIONS

Routine inspections with preventative and /or corrective maintenance programs shall be conducted to ensure that all safety features and devices are maintained and function properly.

All personnel shall inspect for hazardous conditions at all times. Remove sharp edges or protruding objects. Repair or replace worn or damaged parts immediately.

6) CLEANING

Where light cleaning and/or casing cleaning are required, they shall be performed by trained personnel. The conveyor electrical power **must be turned off and locked / tagged out following your company's machine specific procedures**. Special attention may be required at feed and discharge points.

7) SAFETY WARNING

Replace all safety devices, guards and guarding prior to equipment start-up.

SAFETY INFORMATION: RESPONSIBILITIES OF OWNERS AND USERS

INSPECTION AND MAINTENANCE

The lift shall be inspected and maintained in proper working order in accordance with this manual and safe operating practices.

REMOVAL FROM SERVICE

Any lift not in safe operating condition shall be removed from service until it is repaired to the original manufacturer's standards.

REPAIRS, MODIFICATIONS OR ALTERATIONS

All repairs shall be made by authorized personnel in conformance with the manufacturer's instructions.

OPERATORS

Only trained and authorized personnel shall be permitted to operate the lift.

BEFORE OPERATION

Before using the lift, the operator shall have:

- 1) Read and understood the manufacturer's operating instructions and safety rules and been trained by qualified personnel.
- 2) Inspected the lift for proper operation and condition. Any suspect item shall be carefully examined and a determination made by a qualified person as to whether it constitutes a safety hazard. All unsafe items shall be corrected before further use of the lift.

DURING OPERATION

The lift shall be used only in accordance with its intended purpose and within the manufacturer's limitations and safety rules:

- 1) Do not overload the lift. Please note that the lift has a capacity tag attached to it. Do not remove the tag. Exceeding the capacities shown on the tag may cause damage to the lift or injury to personnel.
- 2) Ensure that all safety devices are operational and in place.
- 3) Personnel near operating lifts must maintain a safe distance to avoid being pinched or trapped by the equipment or struck by objects that may fall from the lift platform.

MODIFICATIONS OR ALTERATIONS

Consult the manufacturer before modifying or altering the equipment in any way. (failure to do so may void the warranty)

SAFETY INFORMATION: WARNINGS

WARNING!!!

NO RIDERS!!!

WARNING!!!

To avoid personal injury, never go under the lift platform until the load is removed and the scissor mechanism is securely blocked in the UP position.

WARNING!!!

To avoid personal injury, stand clear of scissor leg mechanism while lift is in motion.

WARNING!!!

Where it is desired to raise the base of the lift to achieve a greater collapsed height, the footprint of the base frame must be fully supported. Failure to do so will damage the lift. This lift is designed to be a floor mount.

WARNING!!!

DO NOT install lifts in pits unless equipped with bevel toe guards or other approved toe protection. A shear point can exist causing serious toe injury or severance.

SAFETY MAINTENANCE BAR PROCEDURE

WARNING!!!

ALWAYS use the safety bars for service or maintenance. NEVER go under or reach under the lift unless both safety bars are securely in place and the power to the unit has been disconnected. NEVER use safety bars with a load on the platform.

CAUTION

Operating the lift with safety bars improperly stored may result in damage to the equipment.

- 1) Remove the safety bars from their storage position.
- 2) Raise the lift to full travel, and place the safety bar. Make sure the safety bar is in place.
- 3) Once BOTH safety bars are in place, slowly lower the lift until the safety bars rest against the end of the base frame. Visually inspect both safety bars to ensure they are secure.
- 4) To disengage the safety bars, raise the lift, move the safety bars and make sure lift operates correctly. Store the safety bars in their original position.

SAFETY WARNING

REPLACE ALL SAFETY DEVICES, GUARDS AND GUARDING PRIOR TO EQUIPMENT START-UP.

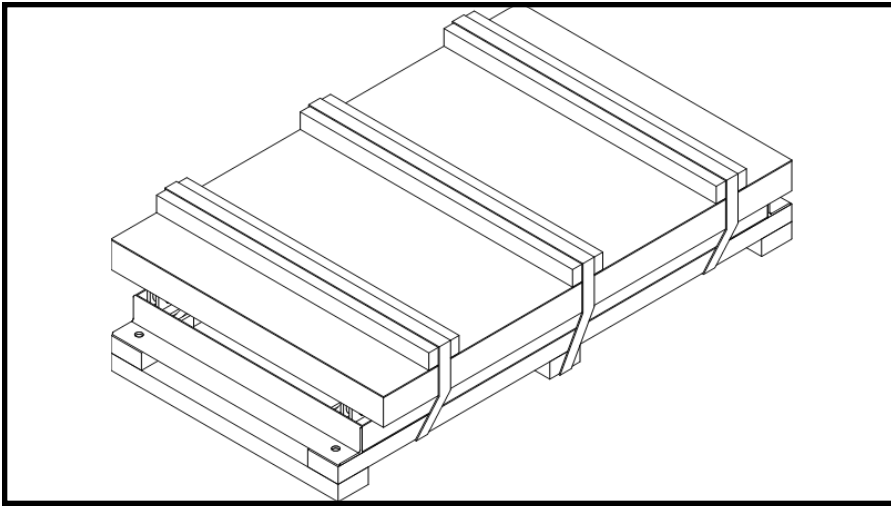
RECEIVING AND INSPECTION: RETURNS, DAMAGES AND SHORTAGES

UNCRATING CHECKLIST

- 1) Compare the bill of lading with what you have received (including accessories).
- 2) Examine the equipment for damage.
- 3) Immediately report shortages or damages to the vendor and carrier.
- 4) Obtain a signed damage report from the carrier and send a copy to the vendor.
Do not attempt to modify or repair damaged equipment prior to filing this report.

Note:

Do not return equipment to the factory without a written return authorization. Returns without written authorization will not be accepted.



Note: Custom products may be crated differently.

RECEIVING AND INSPECTION: REMOVAL OF CRATING

AFTER COMPLETING THE "UNCRATING CHECKLIST"

- 1) Remove crating and packaging.
- 2) Look for boxes, accessories, bags or components such as fasteners, manuals, guard rails etc. that may be banded or fastened to the crating material.

Note: Make sure all fasteners, guards and essential components are not discarded.

GENERAL INSTALLATION: INSTALLATION INSTRUCTIONS

ANCHORED AND PIT MOUNTED HYDRAULIC SCISSOR LIFT TABLES

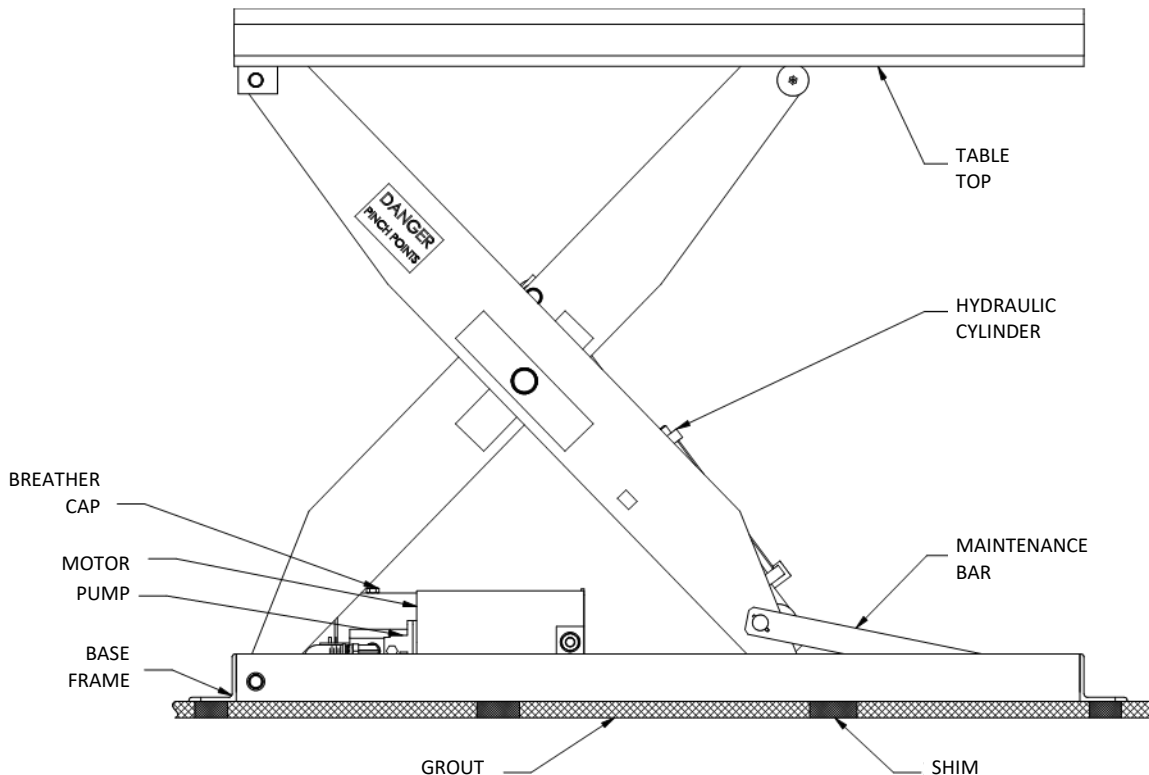
Note:

Permanent installation of hydraulic scissor lift tables may be subject to local codes, regulations, permits or inspections.

- 1) Scissor lifts are shipped on either skids or pallets. With slings placed around the base frame or lift bottom, remove the lift from the skid. Be careful not to damage any of the frame structure. If equipped with lifting tabs (tandem lifts or pit mounted lifts) attach a chain spreader and raise the lift from a center position.
- 2) Position and align the lift so that 1/2" to 1" clearance is maintained around the platform. Level the scissor lift and place solid shims under the base frame as detailed in the drawing below. Grout as required. If shimming and grout will not be used, the floor must be level "to within 1/8 in. over 5 ft. of length and width."
- 3) Where anchor clips have been provided, the bolt fit is close to restrict shifting. Careful location of the anchor bolts is required with special consideration being given to the frame and platform.
- 4) Upon installation all fittings must be tightened and checked for leaks. See chart on page 16.
- 5) Jog the motor with the control in very short jogs, to check if the lift will raise. On 3-phase systems, 2 of 3 power leads may need to be switched so the pump will turn the proper direction.

Caution: Continued operation of a reversed direction hydraulic pump for approximately 30 seconds can burn up a pump, so use short jogs.

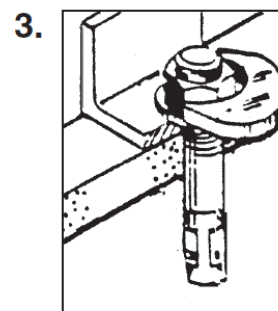
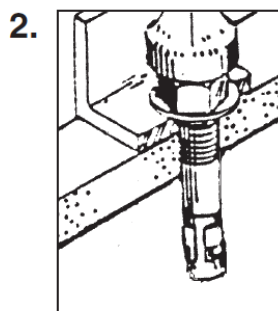
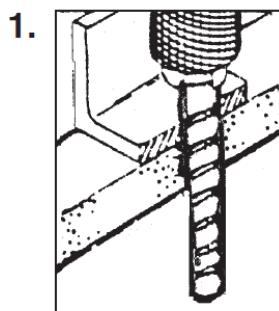
- 6) Raise the lift halfway several times, fully lower, holding the down control an extra 10 seconds each time when the lift is fully lowered to bleed air from the cylinders. Then with the lift fully up, insert the safety maintenance bars, remove the breather cap and add hydraulic oil. Replace the breather cap.
- 7) Clean up any debris or spilled fluid, as this may later be misinterpreted as mechanical trouble or a cylinder leak. Remove the maintenance bars and lower the unit.
- 8) Instruct user(s) in the proper operation of the lift, safety precautions, and equipment capacity. Supply maintenance personnel with this service manual.



GENERAL INSTALLATION: INSTALLATION INSTRUCTIONS

INSTALLATION OF ANCHOR BOLTS

- 1) Position lift according to instructions on page 15. Drill holes in concrete the same diameter as anchor bolts, using anchor clip holes as guides. Drill holes sufficiently deep.
- 2) With nut and washer on anchor bolts, drive anchor bolts into holes so that a minimum of six to seven threads are below the top of the anchor clips.
- 3) Tighten the nuts while making sure enough force is used to spread anchor bolt wedges. Use three or four turns past finger-tightening as a guide.
- 4) After the scissor lift has been aligned, leveled and shimmed, and all anchor bolts installed, pour 1" of grout under the entire base frame. Tighten nuts or anchor bolts after the grout has set and cured. Run hydraulic hose and/or electrical cord through the conduit in the pit wall. Replace the platform.



GENERAL INSTALLATION: TORQUE REQUIREMENTS FOR FITTINGS

37° JIC FLARE TORQUE VALUES

F.F.F.T.	Size	lb. - ft. min./max.
-	-2	6 - 7
-	-3	8 - 9
2	-4	11 - 12
2	-5	14 - 15
1 1/2	-6	18 - 20
1 1/2	-8	36 - 39
1 1/2	-10	57 - 63
1 1/4	-12	79 - 88
1	-14	94 - 103
1	-16	108 - 113
1	-20	127 - 133
1	-24	158 - 167
1	-32	245 - 258

Assembly Steps with a Visual Check

1. With the tube flared, make sure the tubing and threads are clean
2. Lubricate the threads with 10W hydraulic oil
3. Hand tighten the nut/sleeve (approx. 30 lb.-in.)
4. Make alignment marks on the nut and fitting
5. Proceed to tighten to F.F.F.T. or lb.-ft. values
6. When fully tightened make a 2nd set of alignment marks at the fully tightened position

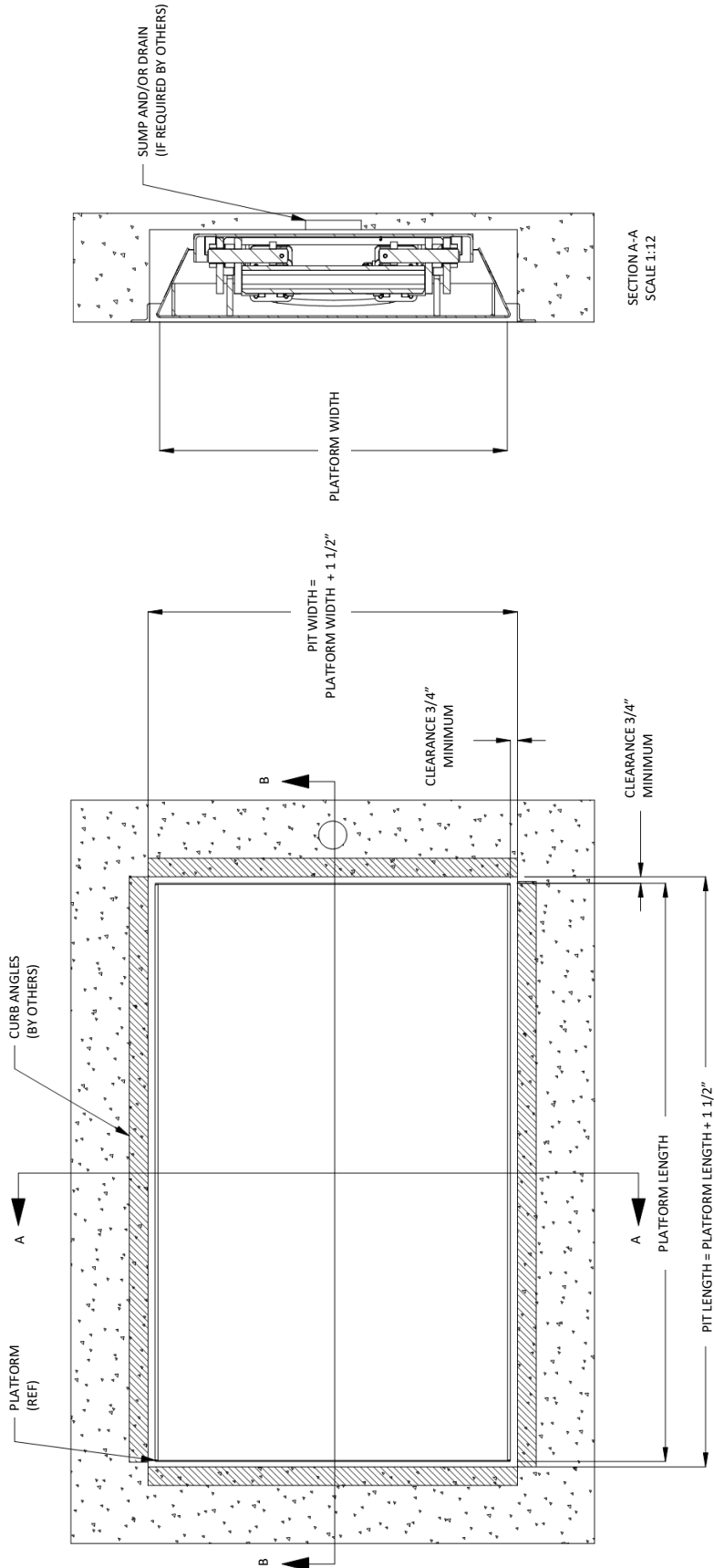
This completes a 37° JIC Flare connection with quick reference visual marks to monitor the nut if it has backed off.

Flats From Finger Tight (F.F.F.T)

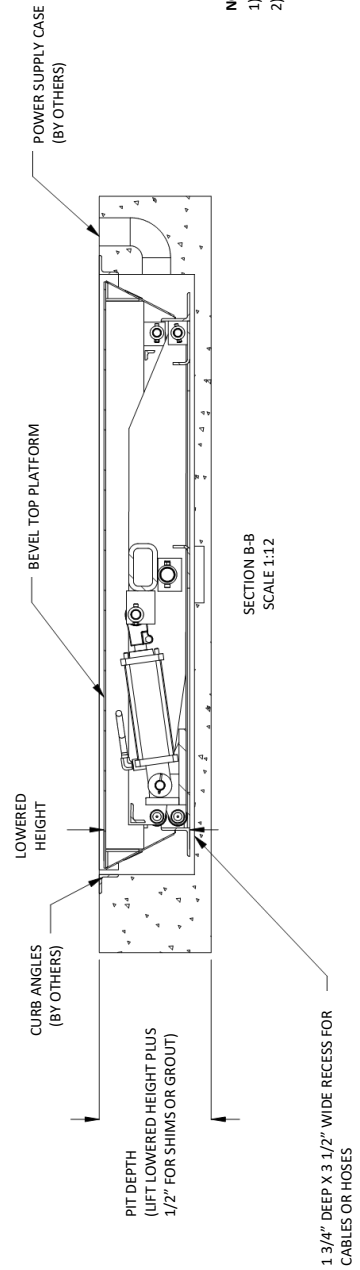
is a Turns Method that counts the number of hex flats past the finger tightened position.

- Torque values are for threads lubricated with 10W hydraulic oil
- Sizes -2 through -8 are less tolerant to over-torque abuse
- Over-torque abuse reduces the clamping force resulting in loss of seal and a reduction in flow.

GENERAL INSTALLATION: PIT LAYOUT DRAWING



SECTION A-A
SCALE 1:12



NOTES:

- 1) All pit work "by others", includes conduit, piping, curb angles, etc.
- 2) Run 3" diameter PVC with long radius sweep elbows to provide pipe case for hose or cables, run from pit to power unit or control location.

GENERAL INSTALLATION: SEQUENCE OF OPERATION

- 1) Hydraulic Scissor Lifts are designed primarily for in-plant applications and are furnished with constant pressure push-button controls. Actuating the "UP" button causes the solenoid on the magnetic starter to pull in, closing its line contacts and allowing the line voltage to be applied to the motor.
- 2) Assuming the motor rotation is correct, the motor will drive a gear pump, which in turn draws oil from the reservoir through the pump and forces it at a constant volume under pressure required by the load. The oil flows through the valves and piping into the hydraulic cylinder. The hydraulic cylinder must displace the incoming volume of oil by increasing the size of the chamber. This is accomplished by forcing the piston inside the cylinder away from the fully collapsed position. The piston is attached to a rod which is attached to structural members of the lift's leg assembly. As the piston and rod move out, the legs open.
- 3) When the desired height or upward travel of the platform is attained, the "UP" button is deactivated by removing the operator's finger from the push-button. The motor stops the pump from pumping oil. The check valve in the pump assembly closes, preventing reverse flow of the oil. This maintains the desired raised position.
- 4) When the operator desires to lower the lift, the person depresses the "DOWN" button on the push-button control which closes the circuit and energizes the down valve solenoid. The solenoid pulls in and activates the Down valve which allows the valve to open. Opening the Down valve allows the oil in the cylinder to flow through the Down valve at a controlled rate and return to the reservoir.
- 5) The downward travel of the lift may be stopped at any desired point by removing the operator's finger from the "DOWN" button.

CAUTION: DO NOT continue to press the "UP" button if the lift is not raising or you have reached the fully raised position as this may result in permanent damage to the motor or pump.

GENERAL INSTALLATION: OPERATING INSTRUCTIONS

CUSTOM HYDRAULIC SCISSOR LIFT

Hydraulic scissor lifts have an excellent safety record overall, but as with all moving equipment, they can be dangerous. Operators must use common sense and take responsibility for the safety of everyone near the lift. They must use the safety devices provided and be careful not to surprise anyone in the area with the movement of the lift.

PREOPERATIONAL CHECKS

- 1) Check all electrical wiring and connections to be sure that they are completed properly and are operational.
- 2) Check for obstructions or debris that may interfere with the safe operation of the lift.
- 3) Be sure that all personnel in the area are a safe distance away from the lift and aware that you are about to operate it.
- 4) If there are any optional safety devices such as bellows or electric toe guards, check them for proper operation.

TEST OPERATE THE EQUIPMENT

- 1) Station yourself so that you will always see the equipment when it is in operation.
Never operate the equipment in the blind!
- 2) Raise the equipment and note that the control is a constant pressure, deadman type. When you release the up or down switch the unit should stop moving immediately and maintain its elevation. If it does not, contact qualified maintenance personnel.
- 3) Cycle the equipment several times to be sure that it is operating smoothly with no jerking or sudden movement. On initial start up there may be some air in the lines or the cylinders may be dry due to storage so it may take several cycles to smooth out the operation. If the operation is not smooth after several cycles, contact qualified maintenance personnel. Any evidence of binding or scraping in the operation should cause you to immediately stop using the lift.
- 4) Check all safety devices for proper operation.
- 5) If you elect to test load the equipment, be sure that you do not exceed the capacities shown on the tag. Overloading may cause structural stresses that may not show up for some time, but will diminish the life and capacity of the unit.

DAILY OPERATION

- 1) All personnel should be required to read and understand the entire operating instructions section of this manual prior to operating the lift.
- 2) Operators must know the capacity of the unit and be aware of any loads that may exceed the capacity.
- 3) Operators must be alert to all personnel in the vicinity of the lift and avoid any surprises to these personnel in regard to movement or the position of the lift at any time. Never operate the unit if you cannot see it and the personnel around it.
- 4) On the first use of the lift each day, each operator should check to see that the lift is operating properly and smoothly. All safety devices must be in place and operating properly.
- 5) If the unit has a traveling electrical cord, the operator must ensure that it is kept away from the lift as it raises and lowers.
- 6) Loads should be centered before raising or lowering the lift as this will help ensure even wear on all moving parts.

MAINTENANCE: MAINTENANCE INSTRUCTIONS

- 1) Always remember that this is a piece of machinery with large moving parts that can seriously hurt you.
- 2) Read and understand this manual in its entirety before attempting service work.

WARNING

- 3) **Always use the safety bars or safety chocks if you are going to work on the unit in the elevated position or must reach under the platform.**
- 4) When using the safety supports, adhere to the following rules:
 - A) Be sure there is no load on the platform.
 - B) Be sure the safety support is properly engaged.
 - C) Hold the down pedal an extra 10 seconds when lowering onto the safety support to be sure that all the weight of the lift is on the support.
 - D) Disconnect and lock / tag out the electricity to the unit to prevent accidental movement of the lift by other personnel.
 - E) Spend as little time as possible under the lift.
- 5) Use only replacement parts recommended by the manufacturer.
- 6) Do not let the equipment stay in disrepair: fix little problems while they are little problems or some of them may get very severe very quickly.
- 7) Inspect the equipment on a regular schedule, preferably monthly.
- 8) Never work on the hydraulics or electrical systems unless the unit is fully lowered or properly sitting on a safety support.
- 9) Never apply a load to the equipment unless the base is continuously supported.

WARNING

- 10) Never expect to hold a leg assembly by simply lifting one end of a platform:
 - A) The roller end of most lifts is not gibbed or captured in any way, so lifting on the roller end simply tilts the platform.
 - B) Even if you raise the clevis end of the platform, if the base frame is not firmly lagged to the ground or held down by some other means, the legs will come up with the platform in a spongy and unpredictable manner and could cause personal injury.
 - C) The only safe way to hold a lift's legs open other than the factory designed safety support, is to block between the clevis end of the platform and the base frame.

The routine maintenance of this equipment is minor and consists of periodic checks.

SAFETY WARNING

REPLACE ALL SAFETY DEVICES, GUARDS AND GUARDING PRIOR TO EQUIPMENT START-UP.

MAINTENANCE: MAINTENANCE SCHEDULES

WARNING

To avoid personal injury, never go under the lift platform until the load is removed and the scissor mechanism is securely blocked in the "UP" position with maintenance bars to prevent accidental lowering of the lift.

Before maintenance or servicing, ELECTRICAL POWER MUST BE TURNED OFF AND LOCKED / TAGGED OUT following your company's machine specific procedure.

Be sure that all pressure is relieved from the hydraulic system before disassembling any components. See General Hydraulic Information.

WEEKLY MAINTENANCE

- Inspect bushings for wear. Replace if necessary.
(See Bushing Maintenance and Lubrication Instructions below.)
- Grease all regreaseable pivot pins. Use No. 2 lithium based grease or equivalent. (if supplied)

MONTHLY MAINTENANCE

- Inspect oil level in reservoir. Fill if necessary.
- Inspect hydraulic hose(s) for pinch points and signs of wear. Correct pinch points and replace hose(s) when necessary.
- Inspect all wires for looseness or wear.
- Inspect all hydraulic fittings for leaks. Tighten as required.
- Clean all debris from the vicinity of floor mounted units in order to avoid interference with the lift mechanism or rollers.
- Operate the unit and check for any abnormal noise or vibrations.
- Check all safety devices on the unit such as the condition of the pleated bellows or smooth operation of the electric toe guards.

SEMI-ANNUAL MAINTENANCE

- Inspect oil for darkening or gritty feel. Change if necessary.
- Inspect oil for presence of water (oil will turn milky in color).
- Change oil if necessary.

BUSHING MAINTENANCE AND LUBRICATION INSTRUCTIONS

The service life of a bushing is generally not predictable, since their failure will develop only as gradual wear, not as catastrophic failure, such as with a bearing. The need for inspection is largely proportional to the actual duty cycle, environment, and application. It is recommended that the bushings be inspected for wear at least once a week during the first few months of operation. It is likely that such frequent attention will prove unnecessary, but will result in the establishment of a realistic maintenance schedule based on experience. Replace bushings as necessary. Failure to do so will damage the scissor arms. It is also recommended that the bushings be inspected following a lengthy period of shutdown.

SAFETY WARNING

REPLACE ALL SAFETY DEVICES, GUARDS AND GUARDING PRIOR TO EQUIPMENT START-UP.

MAINTENANCE: GENERAL HYDRAULIC INFORMATION

- 1) All hydraulic cylinders will require the replacement of packing and seals after a period of time, depending on usage and environmental conditions. It is normal maintenance just like changing oil in an automotive engine. However, maintenance personnel should recognize the difference between leakage and weepage:
 - Weepage is the normal accumulation of fluid that passes the seals in the course of operations. As the hydraulic fluid properly performs its lubrication function on cylinder walls and piston rods. It may be occasionally observed squirting from cylinder breathers, but should stop squirting after several cycles of full stroke when the small accumulation is cleared.
 - Leakage is the fluid which leaks past worn or cut packing and seals. It too may be observed squirting, but does not stop after several cycles and the lift will probably not hold position under load.
 - Always be careful when working around cylinders, not to nick the extended rod or dent the cylinder casing, as this may cause damage to cylinder seals or packing.
 - If you elect to repaint or retouch part of the lift, cover exposed rods with plastic or soluble grease which can be removed after painting to ensure that no paint sticks to the rods and damages packing or seals.
- 2) General precautions:
 - Be sure that all pressure is relieved from the hydraulic system before disassembling any components. Continue to hold the down control for several seconds after fully lowering the unit on its safety support or the ground, before opening a line or component.
 - Always be careful to avoid contamination entering the system. Be careful with the ends of the hoses which may fall into dirt or other foreign materials. If you suspect contamination, flush the system and components.
- 3) Hydraulic fittings sealants and torques:
 - The lift may be equipped with NPT fittings (tapered), (JIC) 37 Degrees (flared) fittings, and SAE fittings (with "O" ring seals).
 - Be careful when tightening NPT fittings not to over tighten and crack them. Swivel fittings are especially vulnerable and should be snugged up enough to stop leaking.
 - If leakage persists after tightening the fittings fairly hard, inspect fittings for burrs on the mating edges.
 - Always use a sealant or Teflon tape with NPT fittings. If using Teflon tape, be sure the tape is started 1 1/2 threads back from the leading edge and only use 2 wraps to be sure that tape does not break off and contaminate the system. Never reuse old sealant or Teflon tape. Once a connection has been opened, remove old and apply fresh sealant or tape.

MAINTENANCE: OIL VISCOSITY RECOMMENDATIONS

HYDRAULIC FLUID

All types of petroleum-based hydraulic fluids are more or less suitable for use. The exact choice of fluid is determined by its wear and temperature viscosity characteristics, taking into consideration oxidation and corrosion protection, material compatibility and air/water separation characteristics.

CHEMICAL AND PHYSICAL PROPERTIES

A.P.I. Gravity (@ 60° F)	28 to 31.5
Viscosity (sus @ 100° F)	194 to 236
Viscosity Index	90 min.
Flash (o.c.)	385 deg. min.
Fire (o.c.)	425 deg. min.

THESE PRODUCTS ARE PREFERRED DUE TO THE ANTI-WEAR ADDITIVES THEY CONTAIN

Cities Service Oil Company	Pacemaker XD 20
Gulf Oil Corporation	Harmony 48 AW
Mobil Oil Corporation	D.T.E. 25
Shell Oil Company	Tellus 929
Sinclair Refining Company	Duro AW 21
Standard Oil Company Ohio	Induston FF-48
Sun Oil Company	Sunvis 821 WR Oil
Texaco Incorporated	Rando Oil HD-Z32
*Valvoline Quality	Hydraulic Oil ISO-46
Wolfshead	Hydraulic Oil-46
Mobil Nuto 46	

FILL COMPONENTS WITH FLUID

Reservoir filled with specified oil level mark.

MAINTENANCE: REPORT ON MISCELLANEOUS MAINTENANCE PERFORMANCE

REPORT ON MISCELLANEOUS MAINTENANCE PERFORMANCE

Date _____

Maintenance Performed:

Date _____

Maintenance Performed:

Date _____

Maintenance Performed:

Date _____

Maintenance Performed:

Date _____

Maintenance Performed:

Date _____

Maintenance Performed:

Date _____

Maintenance Performed:

TROUBLESHOOTING AND REPLACEMENT PARTS: TROUBLESHOOTING

WARNING

- Only qualified service personnel should undertake service work on hydraulic lifts. Service personnel should be able to read and understand wiring and hydraulic diagrams, know how to safely trouble shoot live electrical circuits and be familiar with this manual and all safety devices on this lift.
- No work should be performed beneath a raised lift platform unless safety bars are installed.

LIFT DOES NOT RAISE (POWER UNIT IS RUNNING OR HUMMING)

- Rotation of 3-phase motor may be reversed. Reverse any two electrical leads.
- Motor may be single-phasing (humming). Check wiring.
- Voltage at motor terminals may be too low to run pump at existing load. Check by measuring voltage at motor terminals, or as near as possible while pump is running under load. Reading source voltage or pump-idling voltage is meaningless. Inadequate or incorrect wiring can starve the motor when the source voltage is ample. Correct as necessary.
- Check for line or hose leak. Correct as necessary.
- Check for oil shortage in reservoir. Add oil if necessary.
- Load may exceed rating. Remove excessive load.
- Suction screen may be clogged, starving pump. Screen is attached to suction line in tank. Remove and clean. Drain and replace oil.
- Breather cap on reservoir may be clogged. Remove and clean.
- "Down" valve may be energized by faulty wiring or stuck open. Remove solenoid and check.
- Pump may be seized if motor is humming or blowing fuses or overloads.

MOTOR LABORS OR HEATS EXCESSIVELY

- Voltage may be low. Check at motor terminals while pump is running loaded, not at line source or while pump is idling, inadequate wiring can starve motor, even when source voltage is ample.
- Wiring may be incorrect. On 3-phase units using twist-lock plug, make sure that one leg of motor line is not connected to ground prong.
- Pump may be binding from oil starvation, which develops high internal heat. Pump can be irreparably damaged by oil starvation and may have to be replaced.

LIFT OPERATES "JERKY" OR "SPONGY"

- Lower lift entirely and hold "Down" button an additional 10-30 seconds to bleed air from cylinder.
- Check for oil starvation in pump.

LIFT LOWERS TOO SLOWLY WITH LOAD

- Down valve may require cleaning.
- Check for pinched tubing or hose.
- Oil extremely heavy for existing temperature.

LIFT WILL NOT LOWER (ELECTRICAL)

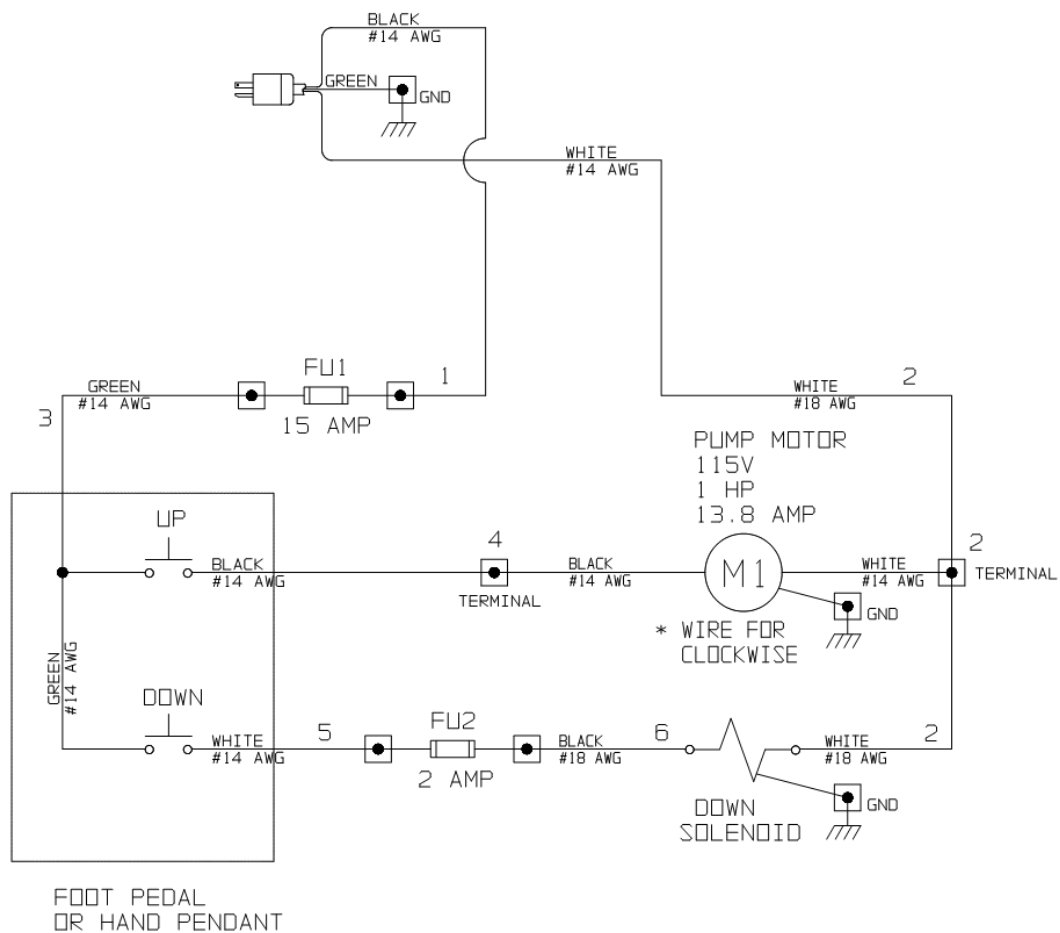
- Solenoid coil may be incorrectly wired, not rated for the voltage, or the line voltage may be excessively low. Check voltage near coil. (120-volt) or (24V)

LIFT RAISES, THEN LOWERS BACK SLOWLY

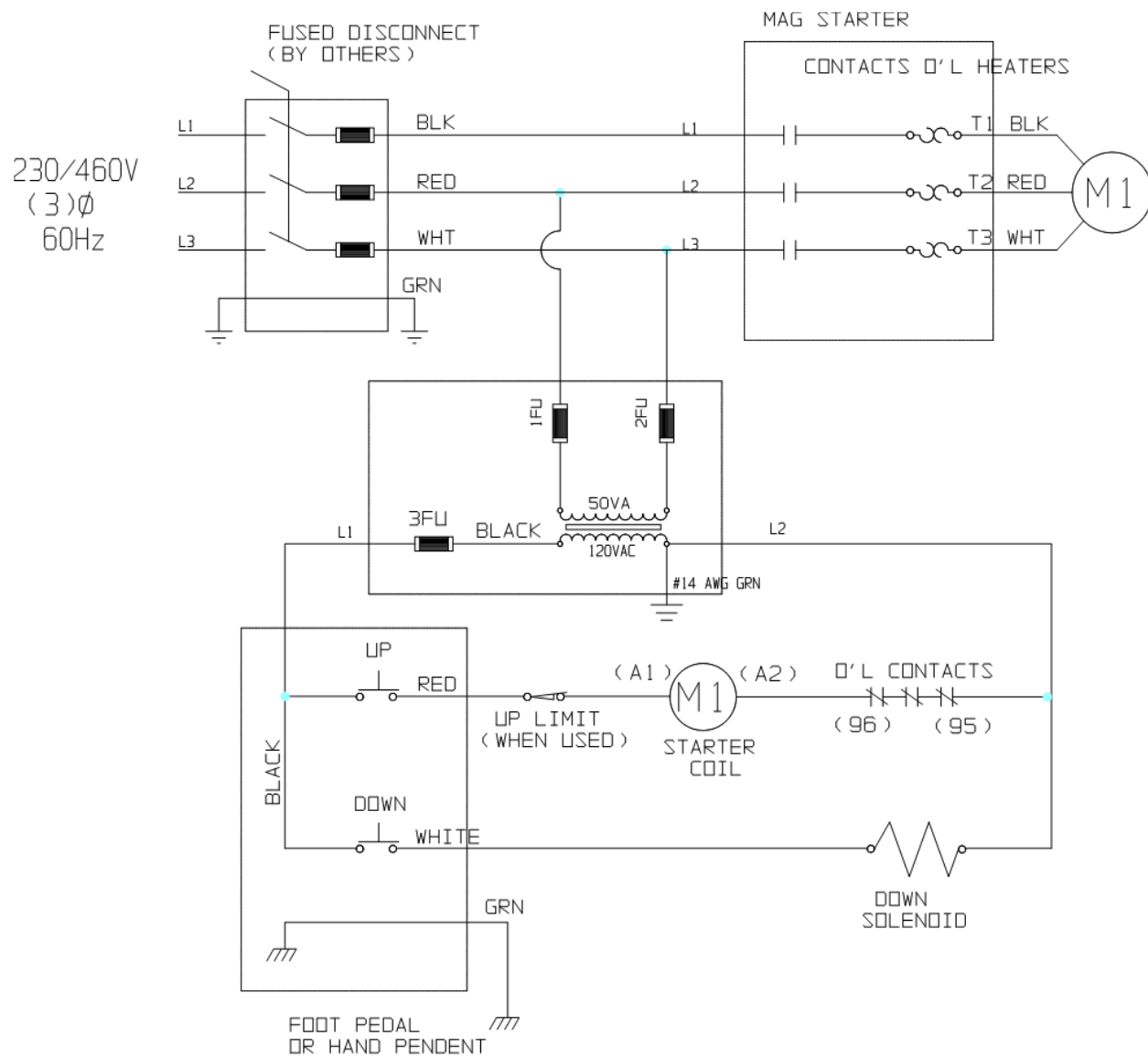
- Down solenoid valve may not be seating. Remove solenoid coil and check again. If lift does not hold with solenoid coil removed, down valve cartridge should be removed and cleaned or replaced as necessary.
- Oil, line, hose or fitting may be leaking. Check and repair if necessary.
- "Check valve" in pump assembly may not be seating. This is indicated by the pump and motor turning backward on their own. Most of the time this condition is audible. Replace pump assembly.

SAFETY WARNING

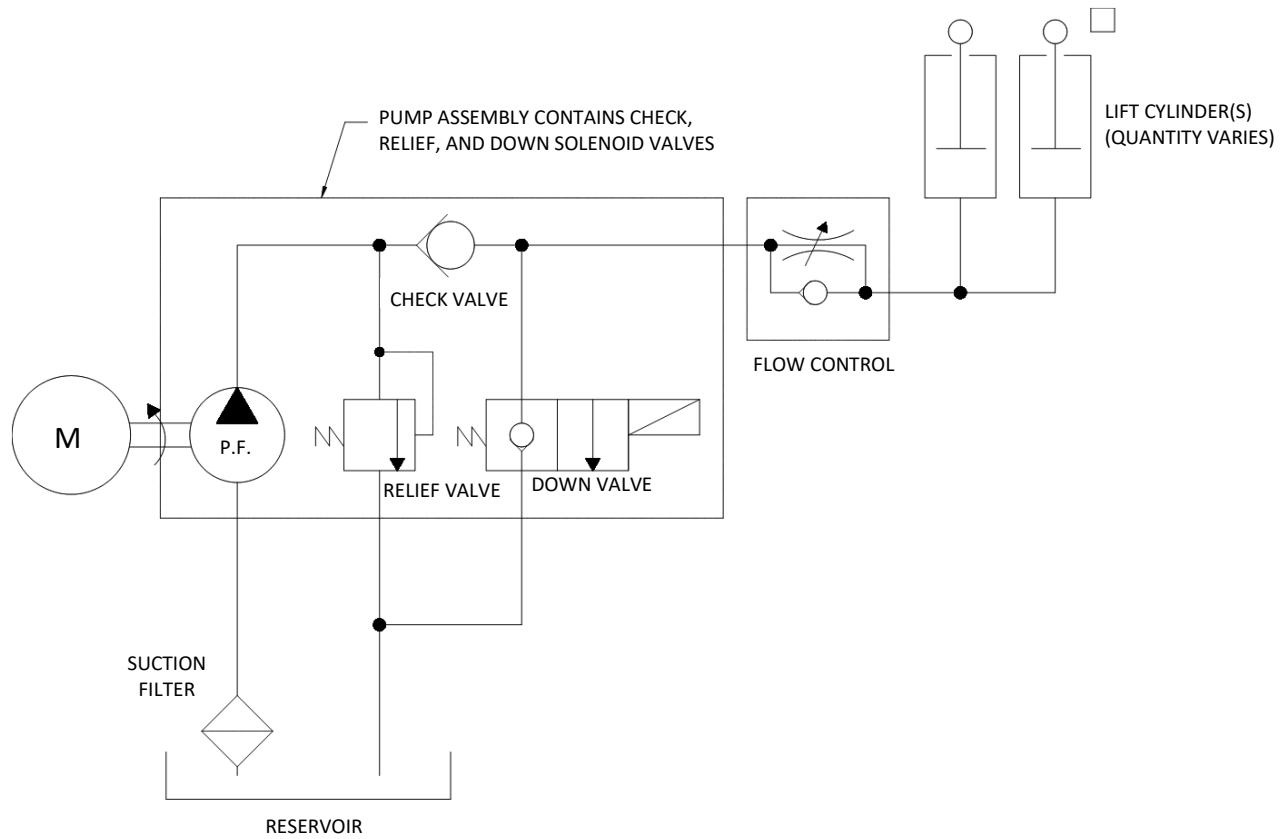
REPLACE ALL SAFETY DEVICES, GUARDS AND GUARDING PRIOR TO EQUIPMENT START-UP.

ELECTRICAL SCHEMATIC: STANDARD SINGLE-PHASE WIRING SCHEMATIC

20 AMP DEDICATED CIRCUIT IS REQUIRED

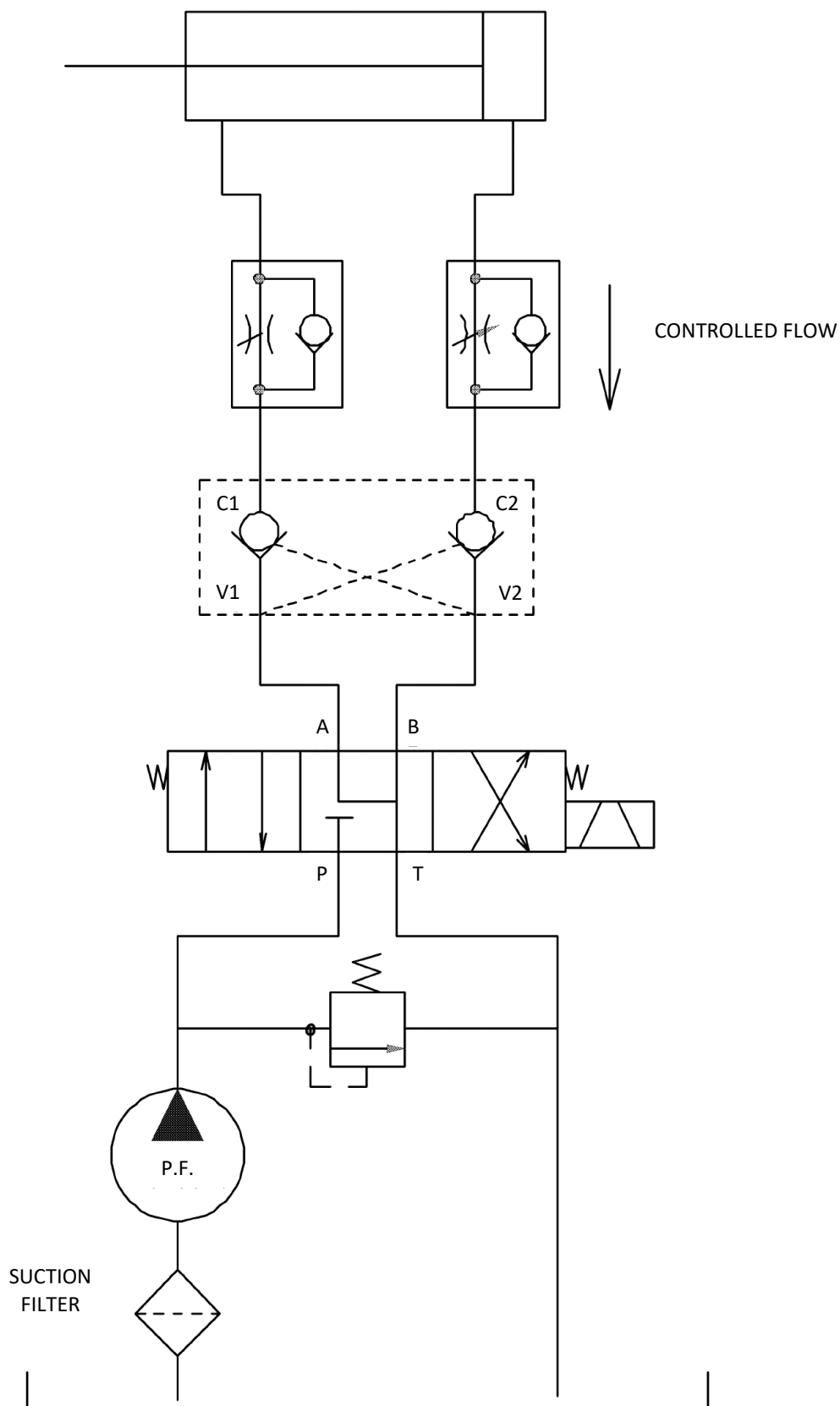
ELECTRICAL SCHEMATIC: STANDARD THREE-PHASE WIRING SCHEMATIC

HYDRAULIC SCHEMATIC: SHOP-AID SERIES SCISSOR LIFTS ONLY



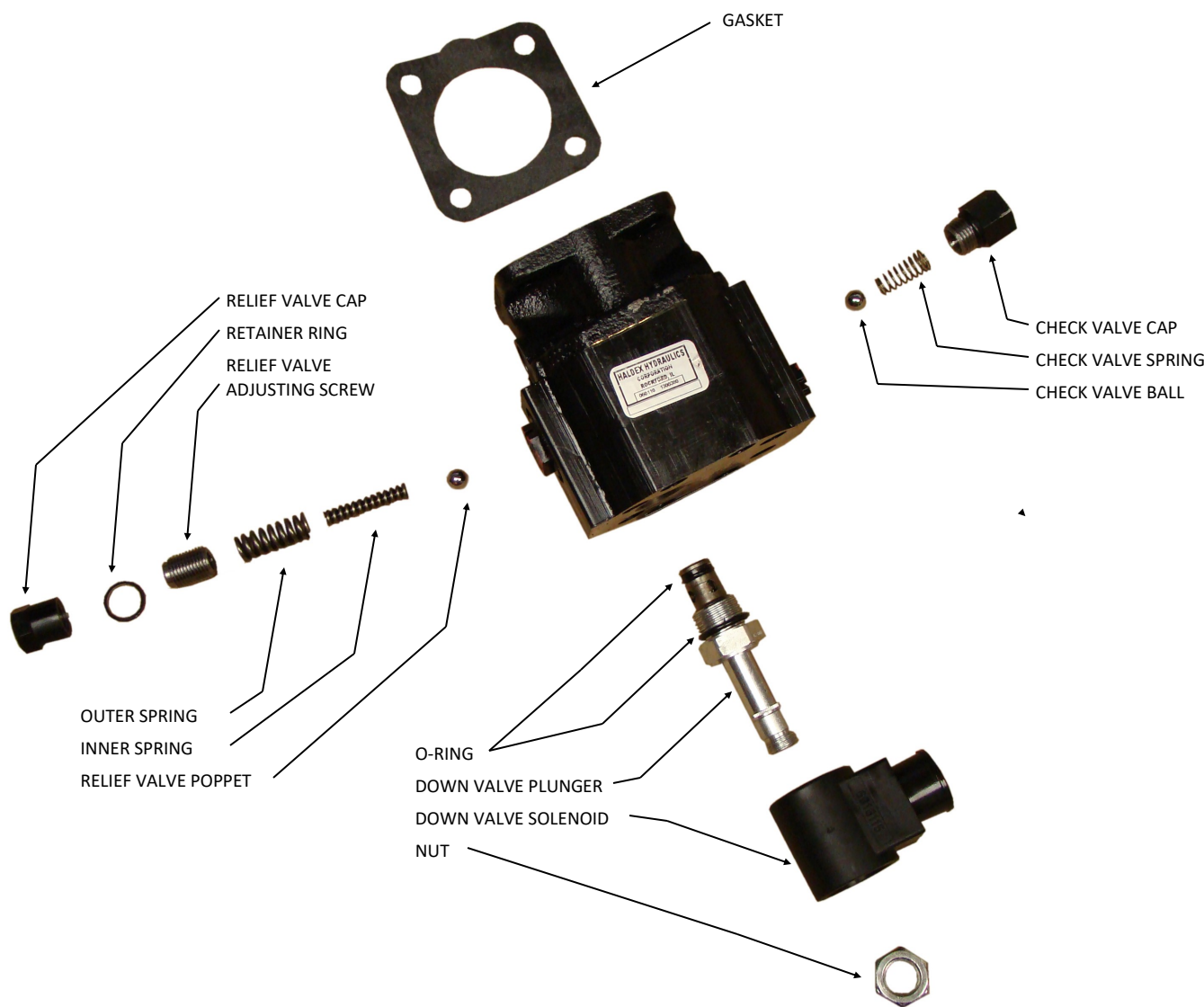
HYDRAULIC SCHEMATIC: POWER-UP/POWER-DOWN SCHEMATIC

POWER UP / DOWN HYDRAULIC SCHEMATIC

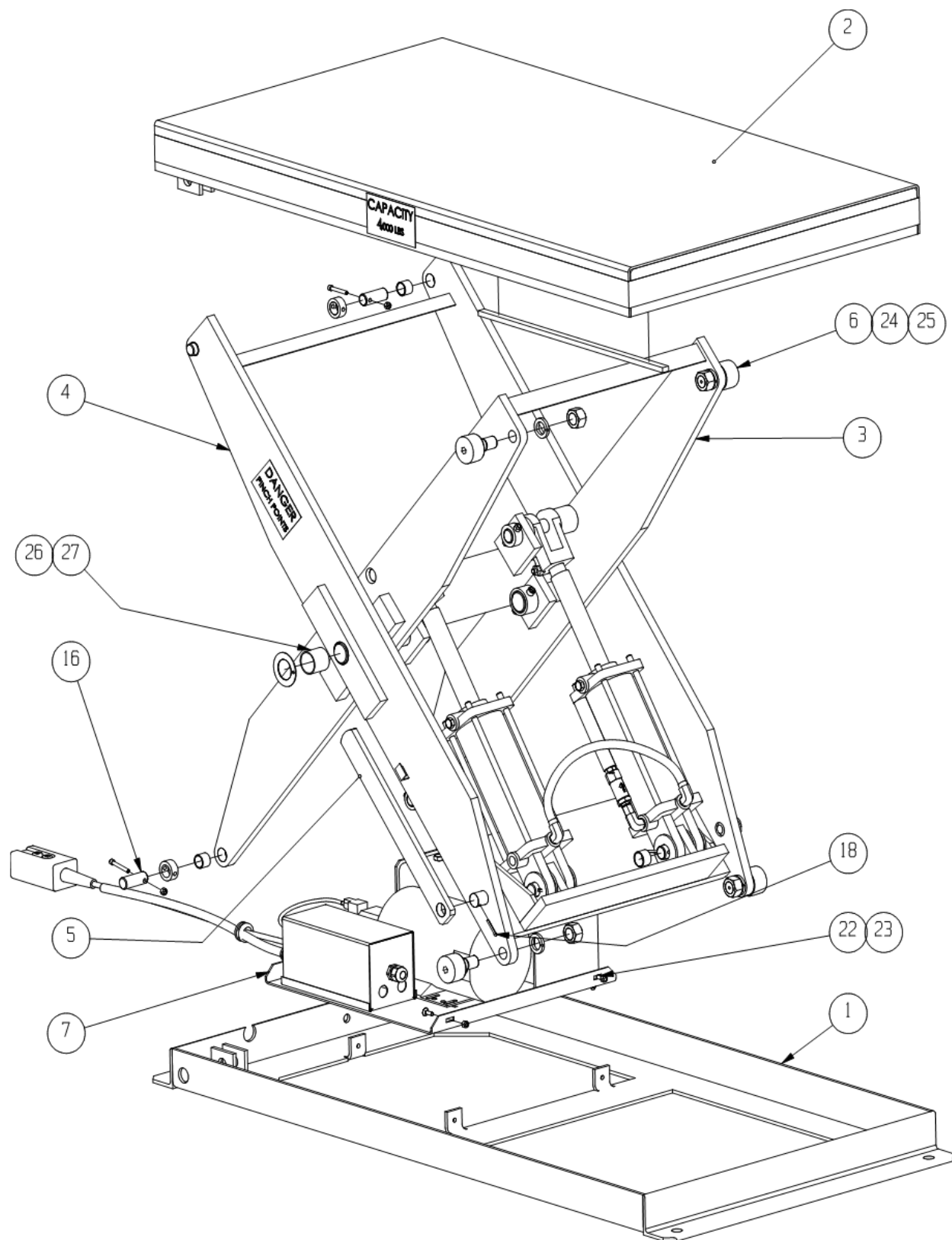


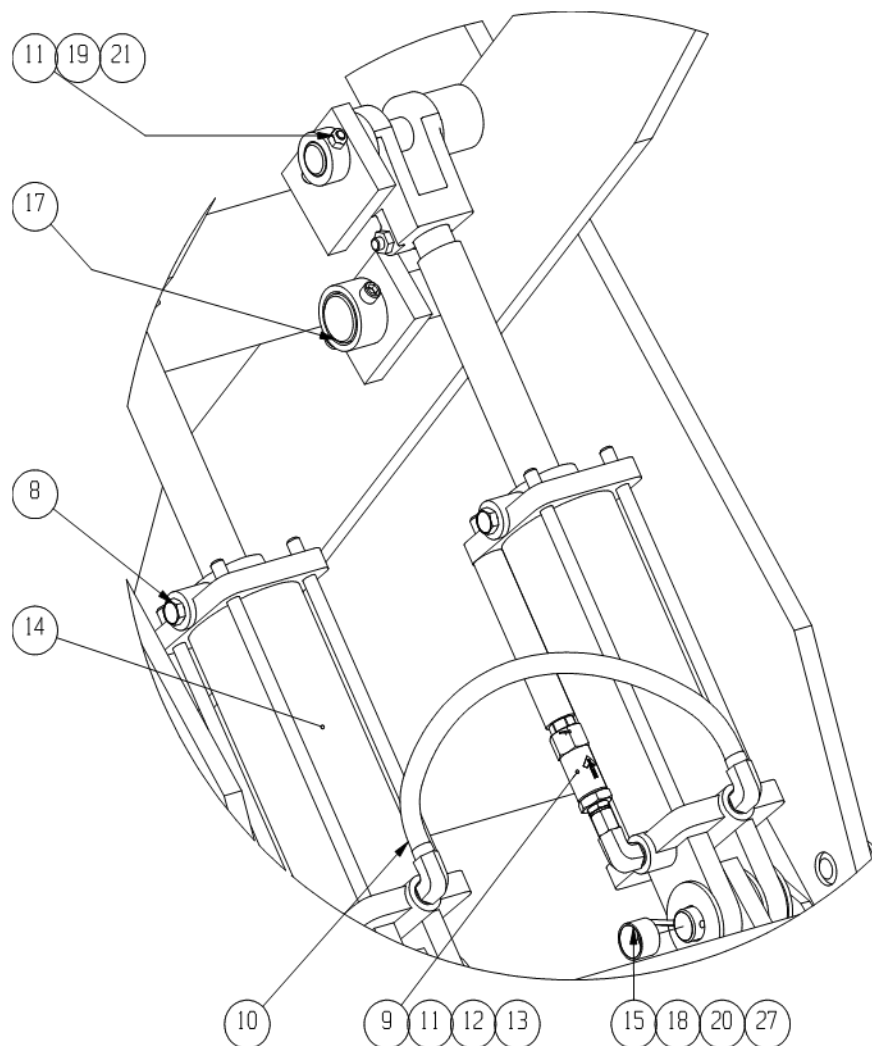
HYDRAULIC SCISSOR LIFT MANUAL

HYDRAULIC SCHEMATIC: PUMP AND DOWN VALVE



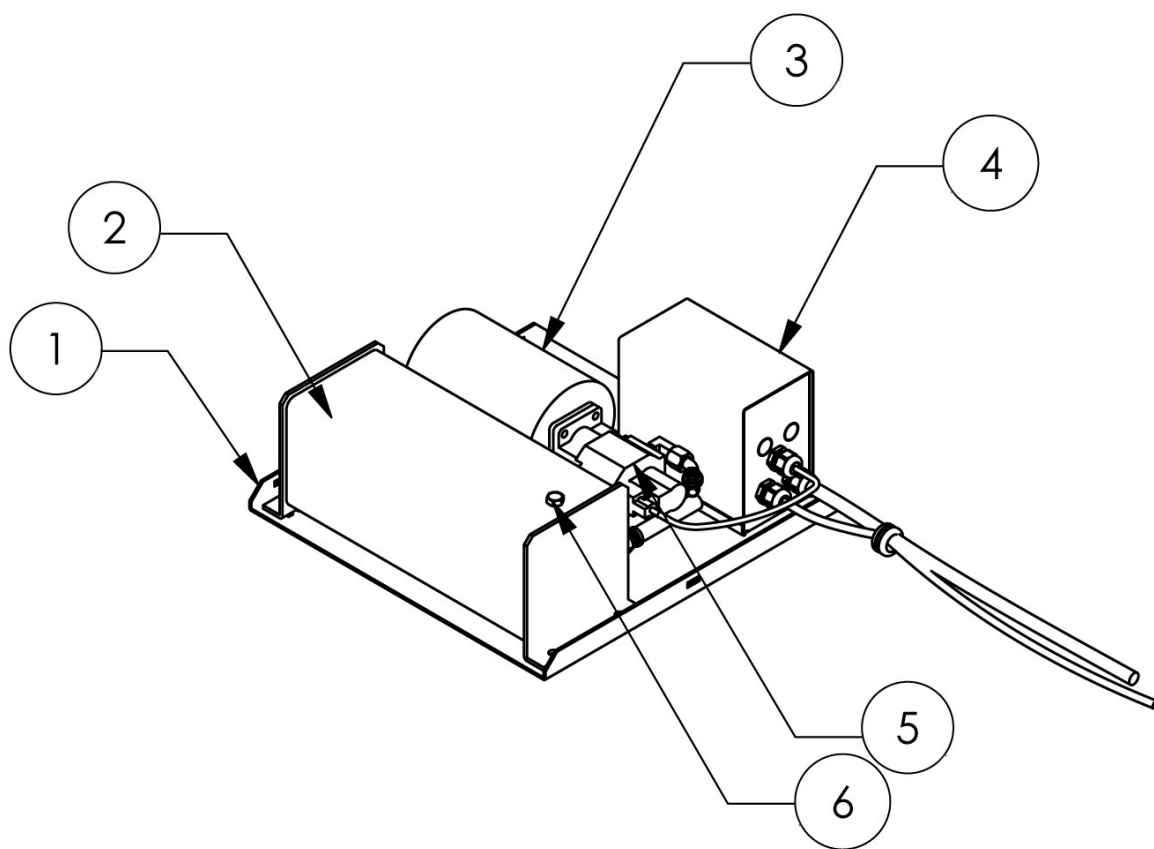
PARTS LISTS: SCISSOR LIFT



PARTS LISTS: SCISSOR LIFT

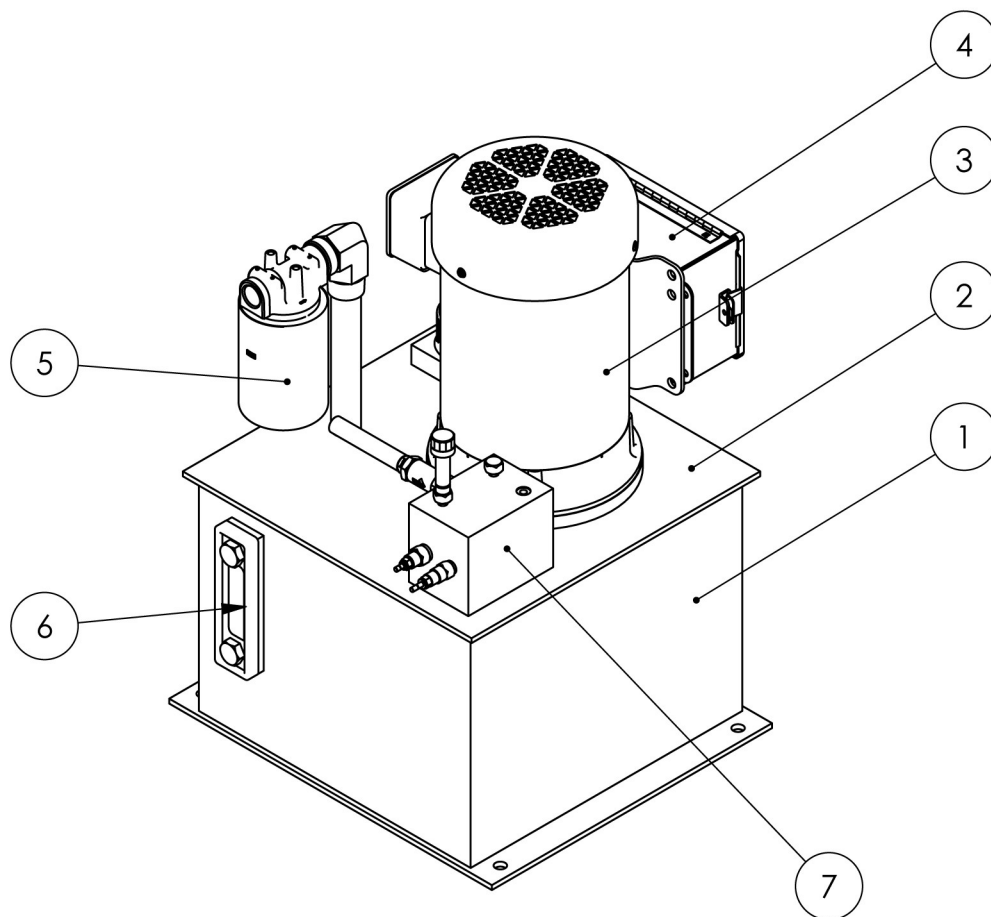
DETAIL	DESCRIPTION	DETAIL	DESCRIPTION
1	BASE WELDMENT	15	BUSHING
2	PLATFORM	16	ARM PIVOT PIN
3	INNER ARM WELDMENT	17	CENTER PIVOT PIN
4	OUTER ARM WELDMENT	18	COTTER PIN
5	MAINTENANCE BAR	19	CLEVIS PIN: CAP END
6	CAM FOLLOWER	20	CLEVIS PIN: ROD END
7	INTERNAL POWER UNIT ASSEMBLY	21	SOCKET HEAD CAP SCREW
8	BREATHER VENT	22	CARRIAGE BOLT
9	FLOW CONTROL	23	NYLOCK NUT
10	HYDRAULIC HOSE	24	HEX NUT
11	HYDRAULIC FITTING: NIPPLE	25	LOCK WASHER
12	HYDRAULIC FITTING: ADAPTER	26	THRUST WASHER
13	HYDRAULIC FITTING: ELBOW	27	FLAT WASHER
14	HYDRAULIC CYLINDER		

PARTS LISTS: SCISSOR LIFT - INTERNAL POWER UNIT



DETAIL	DESCRIPTION
1	MOUNTING PLATE
2	HYDRAULIC TANK
3	MOTOR
4	ELECTRICAL
5	PUMP
6	BREATHER CAP

PARTS LISTS: SCISSOR LIFT - EXTERNAL POWER UNIT



DETAIL	DESCRIPTION
1	RESERVOIR
2	RESERVOIR LID
3	MOTOR
4	ELECTRICAL PANEL
5	FILTER
6	SIGHT GLASS (GUAGE)
7	VALVE BLOCK

[illegible]

TERMS OF SALE RIDER—STANDARD TERMS AND CONDITIONS OF SALE

These Standard Terms and Conditions of Sale ("Terms") apply to the sale of all Uni-Craft Corp.'s products. In these Terms, "Seller" means Uni-Craft Corp., and the "Customer" means the buyer of the goods.

1. **Acceptance of Seller's Terms and Conditions of Sale.** Customer has read and understands these Terms. Customer agrees that (i) Customer's written acceptance of these Terms (including Customer's issuance of a purchase order), (ii) Customer's acceptance of any goods or services from Seller, or (iii) Customer's payment for any goods or services from Seller constitutes Customer's acceptance of these Terms as the sole terms and conditions governing the sale by the Seller to Customer. Customer expressly acknowledges and agrees that all terms and conditions proposed by Customer which are different from or in addition to these Terms are unacceptable to Seller, are hereby expressly rejected by Seller, and shall not become a part of the contract between Customer and Seller. No variation of these Terms shall be effective unless expressly agreed to by the Seller's President or his designated representative in writing.
2. **No Consumer Sales.** Customer acknowledges that Seller is not in the business of selling its Equipment to consumers. Customer warrants and represents to Seller that (a) it is purchasing the Equipment solely for business or commercial purposes, and (b) it is not a "consumer" as defined by any applicable law or regulation.
3. **Quotations.** All quotations are for information only and are not an offer by the Seller. An order by a Customer shall not constitute a contract between it and the Seller unless it has been accepted by the Seller in writing, which acceptance shall be deemed to occur at Seller's offices in Alpena, Michigan.
4. **Prices.**
 - (a) Published prices are not unconditional offers to sell, and are subject to change without notice.
 - (b) Seller's stated prices are F.O.B. shipping point and, unless otherwise specified, do not include the cost of delivery, documentation, the cost of special packaging, unloading, uncrating, installation and/or final on-site adjustment. Such costs may be prepaid and billed as a separate invoice item.
 - (c) Seller's prices do not include any privilege, occupation, personal property, value-added, sales, excise, use, income, or any other tax. Seller may add the amount of any such tax to the invoice. Customer shall be liable for all such taxes, whether or not invoiced by Seller. If an exemption certificate provided by Customer is determined to be invalid, or if Customer fails to timely furnish a valid exemption certificate, notarized affidavit, or other necessary documentation, any resulting sales, use, import, export, or similar excise tax may be billed to Customer.
 - (d) Prices quoted by Seller are subject to change thirty (30) calendar days after quotation. Seller reserves the right to withdraw quoted prices by written notice.
 - (e) In the event of late payment, the Seller reserves the right to charge interest at the lesser of 1.5% per month or the highest nonusurious rate permitted under applicable law.
 - (f) The Customer shall not be entitled to set off, and Customer expressly waives and releases any right of set off, against monies due to the Seller, any sums claimed by or due to the Customer from the Seller under the contract or any other contract between the Seller and the Customer, including, without limitation, any and all claims for damages.
5. **Payment Terms.** All orders are subject to Seller's evaluation of Customer's credit. Provided the Seller in its sole discretion deems the Customer to be credit worthy, standard terms are net 30 days. Seller reserves the right to reject and/or suspend delivery of any order at any time if Seller determines the Customer's credit to be unfavorable. If Seller for any reason in its sole discretion feels insecure about the Customer's willingness or ability to perform, Seller shall have the unconditional right to require payment in full in advance of delivery.
6. **Late Delivery at Customer's Request.** In the event Customer postpones delivery, requests that Seller suspend manufacture, fails to give Seller sufficient information to process Customer's order, or otherwise fails to take delivery, the Seller shall be entitled, without prejudice to any other rights it may have, to treat the contract at an end and to resell the Equipment, or to submit an invoice for the Equipment in which event payment in full shall immediately become due. In either case the Seller shall charge Customer for the handling and storage of the Equipment from the date of the invoice to the date of delivery to the Customer or of disposal elsewhere.

TERMS OF SALE RIDER—STANDARD TERMS AND CONDITIONS OF SALE

7. Delivery; Installments; Force Majeure; Nonacceptance.
 - (a) Except where specifically agreed to the contrary in writing by Seller, delivery to Customer shall be F.O.B. shipping point and risk of loss shall pass to Customer upon delivery to the carrier.
 - (b) Delivery dates are estimates only, and time is not of the essence. Although Seller shall endeavor as far as practicable to deliver the Equipment adhering to the delivery schedule, Seller may in its sole discretion cancel or modify all delivery dates and Seller shall not be liable to Customer for any loss or damage whatsoever, including loss of profit or any direct, indirect, special, incidental, consequential or other damages, caused by such cancellation, modification, late delivery or failure to deliver.
8. Solvency; Security.
 - (a) Customer represents that Customer is financially solvent.
 - (b) To secure any unpaid portion of the purchase price, or any other indebtedness from Customer to Seller, Customer hereby assigns to Seller and grants Seller a security interest in the Equipment. Customer agrees to execute such financing statements or additional documents, or take such other action, as Seller may reasonably require to perfect such interest and Customer hereby appoints Seller its attorney-in-fact for the purpose of executing such documents or taking such action.
9. Substitutions and Charges.
 - (a) Unless otherwise agreed in writing, Seller reserves the right to substitute the latest superseding design and/or manufactured equivalent equipment based on form, fit, and function, for the Equipment.
 - (b) Customer may, with the express written consent of Seller, make changes in the specifications for equipment or work covered by the contract. In such event the parties will adjust the contract price and delivery dates. Seller shall be entitled to a reasonable profit plus costs and expenses incurred for work and materials rendered unnecessary as a result of such changes, and for work and materials required to effect said changes.
10. Customer's Obligations. Customer agrees that (i) before ordering the Equipment, Customer shall determine the suitability of the Equipment for Customer's intended use and shall assume all risk and liability whatsoever in connection with that determination; (ii) Customer shall use the Equipment properly and according to Seller's instructions, complying with all safety requirements; (iii) Customer shall not remove or change any instructions or warnings placed on the Equipment, or remove or modify any safety devices installed by Seller; and (iv) Customer shall use, and install the products in accordance with all applicable laws and codes. Customer shall indemnify and hold harmless the Seller, and, if so requested, defend the Seller, from any and all costs, claims, damages, judgments and expenses (including reasonable attorney fees) suffered or incurred by Seller that arise out of, or as a result of or in connection with, any act, omission, or use of the Equipment by Customer or its employees, agents, or customers, or any breach by Customer of these Terms. Customer shall notify the Seller promptly, and in any event within thirty days, of any accident or malfunction involving the Equipment which results in personal injury or damage to property and shall cooperate fully with the Seller in investigating and determining the cause of such accident or malfunction.
11. Cancellation. Customer may cancel undelivered parts of any order only with the written approval of Seller. If the Seller for any reason in its sole discretion feels insecure about the Customer's willingness or ability to perform, Seller shall have the unconditional right to cancel this sale. In the event of any cancellation by either party, Customer shall pay to Seller the reasonable costs and expenses (including engineering expenses and all commitments to Seller's suppliers and subcontractors) that Seller has incurred prior to such cancellation, plus the Seller's usual rate of profit for similar work.
12. Seller's Compliance with Regulatory Laws. Seller makes no promise or representation that the Equipment will conform to any national, provincial, federal, state or local laws, ordinances, regulations, codes, or standards.
13. Disclaimer of Warranties; Customer's Exclusive Remedy. THE WARRANTIES HEREIN ARE IN LIEU OF ALL OTHER WARRANTIES, EXPRESS OR IMPLIED, STATUTORY OR OTHERWISE. SELLER MAKES NO OTHER WARRANTIES EITHER EXPRESS OR IMPLIED. IN PARTICULAR, SELLER MAKES NO WARRANTY OF MERCHANTABILITY OR FITNESS FOR A PARTICULAR PURPOSE. SELLER SHALL HAVE NO LIABILITY TO CUSTOMER FOR DIRECT, CONSEQUENTIAL, OR INCIDENTAL DAMAGES OF ANY KIND WHATSOEVER, INCLUDING BUT NOT LIMITED TO PERSONAL INJURY, PROPERTY DAMAGES, LOST PROFITS, OR OTHER ECONOMIC INJURY DUE TO ANY DEFECT IN THE EQUIPMENT, ANY USE OR INABILITY TO USE THE

TERMS OF SALE RIDER—STANDARD TERMS AND CONDITIONS OF SALE

EQUIPMENT, OR ANY OTHER BREACH BY SELLER OF THIS CONTRACT. SELLER SHALL HAVE NO LIABILITY TO CUSTOMER IN TORT (INCLUDING WITHOUT LIMITATION NEGLIGENCE) FOR ANY PRODUCT LIABILITY CONCERNING THE EQUIPMENT, OR FOR THE OMISSION OF ANY WARNING THEREFROM. THE FOLLOWING REMEDY SHALL CONSTITUTE THE SOLE AND EXCLUSIVE REMEDIES OF CUSTOMER UNDER THIS CONTRACT AND IS EXPRESSLY MADE IN SUBSTITUTION OF ANY AND ALL OTHER REMEDIES.

The Seller warrants that the Equipment will be free of defects in workmanship and material (if properly installed, operated and maintained) for a period of one year or 2080 hours of use, whichever is sooner, from date of shipment to Customer, subject to the limitations hereunder set forth. The warranty period for all "Apex" brand Uni-Craft Corp. products shall be two years or 4160 hours of use, whichever is sooner, from the date of shipment to Customer, subject to the limitations hereunder set forth. If within the warranty period, the Seller receives from the Customer written notice of any alleged defects in the Equipment and if the Equipment is not found to be in conformity with this warranty (the Customer having provided the Seller a reasonable opportunity to perform any appropriate tests thereon) Seller will, at its option, either repair the Equipment or supply a replacement therefore.

The Seller under either option shall have the right to require Customer to deliver the Equipment to Seller's designated service center and the Customer shall pay all charges for in-bound and out-bound transportation and for services of any kind, diagnostic or otherwise, excepting only the direct and actual costs of repairing or replacing the Equipment. If after reasonable effort the Seller cannot correct said deficiencies, the Seller will make an equitable price adjustment based on actual performance, provided that such adjustment shall under no circumstances exceed the purchase price. The Seller further warrants that the parts, and components supplied by the Seller and forming a part of the Equipment will be free from defects in material and workmanship for a period of one year or 2080 hours of use, whichever is sooner, from date of shipment to the Customer. The Seller's liability shall be solely limited to the supplying of replacement parts and materials.

14. General Warranty Conditions. The foregoing warranties are subject to the following general conditions:
 - A. For purposes of these Terms, the Equipment will be deemed defective only if (i) the defect materially impairs the value of the Equipment to Customer, (ii) the Equipment was defective on the date of original shipment, and (iii) the Customer notifies Seller in writing of the claim within the warranty period.
 - B. If the Customer requests and the Seller agrees to the performance of warranty work during any time other than Seller's ordinary business hours and work periods, the Customer shall be required to pay for all premium time.
 - C. If the Customer requests and the Seller agrees to the performance of warranty work, the Customer shall be required to pay for the travel time, living and travel expenses of any personnel of Seller required to perform such warranty work.
 - D. Equipment sold but not manufactured by the Seller will be warranted against defects in material and workmanship consistent with the warranty policy of the original manufacturer of the equipment.
 - E. All warranties shall be null and void where the Equipment has been subjected to accident, altered, misused or abused, or Customer has failed to ensure proper storage, installation, operation and/or maintenance of the Equipment. Use of the Equipment in improper or non-recommended applications (including operation above rated load capacity), or use of parts or components not meeting the Seller's specifications or quality standards (e.g., non-Uni-Craft parts or components) renders all warranties null and void.
 - F. The foregoing warranties do not apply to any product or part thereof which has a life, under normal usage, shorter than the indicated warranty period such as, but not limited to, belts and bearings.
 - G. All production figures, throughput rates, production rates, capacity figures and cost figures contained in Seller's proposals, printed literature, advertising, drawings and/or quotes are based on tests Seller believes are reliable and on Seller's understanding of the Customer's project and are not warranted or otherwise guaranteed.
 - H. If the Seller provides Customer with assistance or advice concerning the Equipment or any parts/service supplied hereunder or any system or equipment in which any such part/service may be installed and

TERMS OF SALE RIDER—STANDARD TERMS AND CONDITIONS OF SALE

which is not required pursuant hereto, the furnishing of such assistance or advice shall not subject Company to any liability, whether based in contract, warranty, tort (including negligence) or otherwise.

15. Remedies for Customer's Default.
 - (a) The Seller shall have the option (without prejudice to any of its other rights against the Customer) by notice in writing to the Customer to cancel any order or to suspend delivery in the following events:
 - (i) should any sum owing by the Customer to the Seller be overdue;
 - (ii) should the Customer be in any breach of any term of the contract with the Seller;
 - (iii) should the Customer enter into any arrangement with, or for the benefit of, its creditors or file a petition in bankruptcy, or have a receiver appointed over all or part of its assets, or if any order is made against the Customer for the preservation, safeguarding, or regulating the use of, the Customer's property or assets; or
 - (iv) Seller determines in its sole discretion that the Customer is not creditworthy.
 - (b) If litigation or other legal action is commenced by Seller to enforce its rights under these Terms, Seller shall have the right to collect all of the expenses of such litigation or other action, including reasonable attorneys' fees, from Customer.
 - (c) In addition to the foregoing, Seller shall have all the rights and remedies given to sellers by applicable law. Seller's rights and remedies shall be cumulative and may be exercised from time to time. Seller shall not lose any right because it has not exercised it in the past.
16. No Waiver. Forbearance or indulgence by the Seller shown or granted to the Customer whether in respect of these Terms or otherwise shall not affect or prejudice the rights of the Seller against the Customer or be taken as a waiver of any of these Terms.
17. Interpretation.
 - (a) Headings. The headings to these Conditions have been inserted for convenience and shall not affect their construction.
 - (b) Severability. If any of these Terms is found to be invalid or unenforceable, the provision shall be ineffective to the extent of such invalidity or unenforceability, but the remaining provisions shall be unaffected.
18. Applicable Law and Jurisdiction. The contract between Seller and Customer shall be considered to have been made in the State of Michigan and shall be governed by and interpreted according to Michigan law. Any action or suit arising hereunder must be brought within one (1) year from the date the cause of action accrues. Any lawsuit arising out of this contract shall be brought in the federal or state court having jurisdiction over Alpena County, Michigan. Customer consents to personal jurisdiction in such court and waives any other jurisdiction that might be available by reason of presence or otherwise.

APPENDIX 1: STANDARD HYDRAULIC POWER UNIT INSTALLATION GUIDE



INSTALLATION AND MAINTENANCE MANUAL

CUSTOM POWER-UNITS

HYDRAULIC POWER UNIT START-UP INSTRUCTIONS

- 1) Fill reservoir with clean oil. We recommend using a filter cart. New oil from a drum is not clean enough for your hydraulic system.



- 2) Fill the pump case drain with oil when the pump is mounted outside the tank.



- 3) For the initial startup, reduce the pressure settings to a minimum.

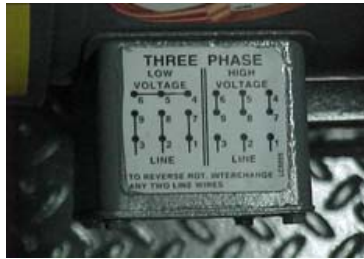


- 4) Open ball valves in pump inlet line.



APPENDIX 1: STANDARD HYDRAULIC POWER UNIT INSTALLATION GUIDE

- 5) Wire motor for proper voltage. Check the motor wiring diagram. Have your electrician determine if you should wire for wye or delta. The delta run configuration is typically used with full voltage starters.



- 6) Check the motor for proper rotation. If correct, jog the motor several times to purge the air from the pump. When the pump has primed, run it at low pressure for several minutes. If possible, cycle the actuators to purge air from the hydraulic system while the system pressure is low.



- 7) Energize low-pressure standby solenoid, and slowly increase pressure. Set the safety relief valve approximately 15% higher than the pump setting if you have a variable displacement pump. With a gear pump, the relief valve determines the system pressure.



- 8) Set the water-modulating valve if applicable. Turning the adjusting screw clockwise reduces the temperature the valve opens.



APPENDIX 1: STANDARD HYDRAULIC POWER UNIT INSTALLATION GUIDE

- 9) When all lines and components have been thoroughly flushed, change the filter elements. Replace elements every 500 hours, or when the indicator shows a clogged element. If your filter has a pressure gauge, change the element when the indicator shows 25 psi.





P.O. Box 471
Alpena, Michigan 49707
Main: 989.354.1375
www.uni-craftcorp.com